

Calamus poilanei

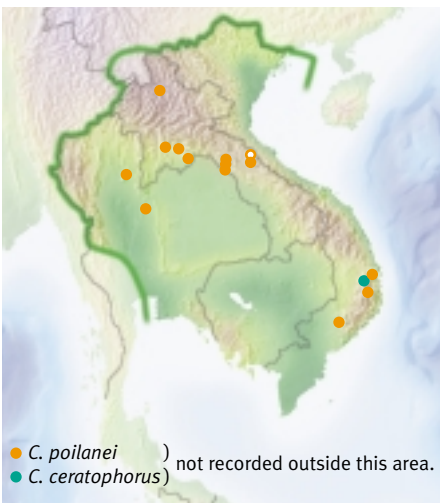
(*wai thoon, blong thoon, gaparl, probably also wai khom, blong chang*)

Climbing Solitary Flagellum Knee conspicuous

The best large Lao cane, heavily harvested. Regenerates poorly because it is solitary-stemmed.

Look for:

- Stem solitary, very robust, leaf sheath often more than 5 cm diameter, with a few thick spines.
- Leaflets regularly arranged, with many bristles on the upper face.
- Petiole margins usually have spines paired, pointing in different directions.



Habitat

In Lao grows in evergreen forest at 300–1300 m. In Thailand at 600–700 m and in S Vietnam at 500 m.

Fruiting and flowering months

Flowers ?

Fruit unripe 4 (Lao), ripe 8 (Lao), 11 (Vietnam).

Uses

Handicrafts: very high quality.

Trade: the most valuable cane in trade in Lao.

Shoot: edible.

Planting

Small trial plantation at Nam Xuang in Lao.

High potential, although seedling establishment is currently slow. Reportedly planted in Vietnam.

Stem

Stem up to 150 m long and 3–5 cm diameter.

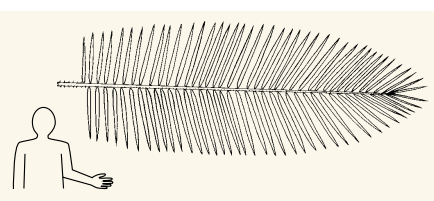
Sheath 2.5–7.5 cm diameter.

Sheath yellowish green, sometimes with patches of dark indumentum.

Spines few, solitary or occasionally in pairs. Broad-based, yellowish-green, black tipped, 1.5–3.5 cm long.

Ocrea tiny, dry, with no spines or bristles.





Whole leaf 2–4 m long.

Petiole 20–60 cm long. Margin often has pairs of black-tipped spines pointing in different directions.

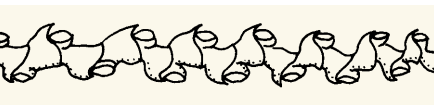
Largest leaflets 50–80 cm × 2–3 cm.

Above three prominent veins with bristles, below a few bristles on the mid-vein. Margins bristly.



Inflorescence 2–6 m long or more, plus flagellum. Branches quite stiff.

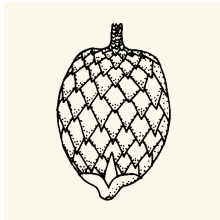
Primary bracts entire, quite tightly sheathing. Armed with stout claws and some short stout spines.



♂ usually 3-branched.



♀ usually 3-branched. Flower cups not on stalks.



Fruit

2.0 cm long

1.4 cm wide

Scales pale with fine dark margins.

Seed not ruminate.

Compare:

- *C. laoensis* (18), *C. flagellum* (19) and *C. rudentum* (20): all of similar size, but clustering and with sheaths very thickly covered in long flat spines which are black or black-tipped.

- **8a *Calamus ceratophorus***

Climber, quite large, has a cirrus not a flagellum, leaflets regular, sheath spines few and thick, bent down. Leaflets probably lack bristles on both surfaces and margins, petiole spines probably solitary. Female rachillae very distinctive, the flower cups on stalks (see picture). Not known whether solitary or clustering.

