

Calamus viminalis

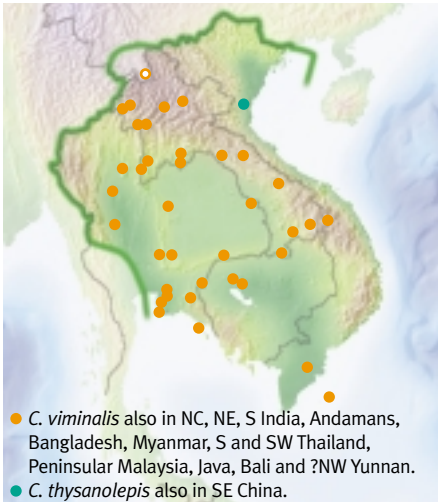
(wai ton, wai nyair, wai na, wai khom, wai namhang, wai keethao, wai nang, wai tiudeet, wai namleuang, rebou, blong chang, katengparua)

Climbing Clustering Flagellum Knee conspicuous

A very common species, often surviving as old clumps around villages.

Look for:

- Leaflets in groups of 2–4, pointing in many different planes, with one line of pale spines above.
- Sheaths spines long, yellow with red tips.
- Petiole has long, straight spines (up to 5 cm long).



Habitat

In Lao and Thailand in scrub/forest edge at 100–600 m. In N also evergreen forest up to 600 m.

Fruiting and flowering months

Flowers in bud 8 (Lao), 9–12 (Thailand), open 8–10 (Lao), 7, 9, 12 (Thailand). Fruit unripe 9–3 (throughout), ripe mainly 4, sometimes 3–6 (Lao), also some very unripe 5–6 (Thailand). Two flowering seasons?

Uses

Handicrafts: moderate quality.

Trade: suitable.

Shoot: edible.

Fruit sometimes sold for food.

Planting

Plantation at Nam Xuang. Managed gardens for shoots (Bokeo Prov.) and canes, shoots and fruit (Vientiane Prov.) Widely planted for shoots in NE and E Thailand

Stem

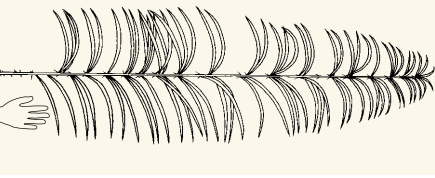
Stem up to 35 m long and 0.5–1.5 cm diameter, occasionally even less. Sheath 0.9–3 cm diameter (rarely even 0.5 cm).

Sheath pale green with white indumentum which rapidly falls off.

Spines yellow with red tips when alive, needle-like with a broader base, up to 4 cm long.

Ocrea tiny, dry, with no spines or bristles.



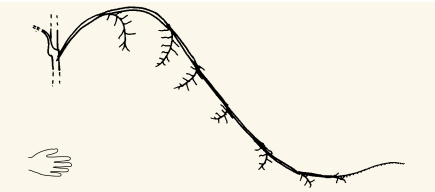


Whole **leaf** 1.0–1.5 m long.

Petiole of upper leaves 5–20 cm long with straight spines 1–4 cm long.

Largest leaflets 15–35 (rarely only 7–10) cm × 1–1.5 cm.

Leaflets in groups of 2–4 on each side, pointing in all directions. Above middle veins prominent. One line of yellow-based bristles above and below. Margins bristly.



Inflorescence 1.5–3 m long plus flagellum. Branches quite stiff, slightly pendulous.

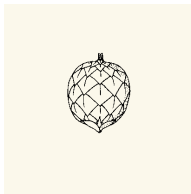
Primary bracts entire, closely sheathing, with scattered claws.



♂ usually 3-branched but looks 2-branched. Rachillae very short (≤ 1 cm), crowded with tiny flowers. Picture shows a branch with many rachillae.



♀ usually 2-branched. Rachillae 5–15 cm long. Some rachilla bracts contain two female flowers with one neuter flower, others only one. The percentage varies between plants.



Fruit

0.8 cm long

0.8 cm wide

Whitish (yellow when dry) with fine dark margin. Perianth wholly split, no tubular part.

Seed not ruminant.

Compare:

- *C. acanthophyllus* (1): Leaves similar but smaller, leaflets spinier. No stem.
- *C. salicifolius* (17a): Smaller, no climbing organ, small bristly ocrea, inflorescence much smaller.
- *C. siamensis* (5): Very similar but leaflets in one plane, interrupted pinnate or regular.

● 4a *Calamus thysanolepis*

Leaflets grouped and plumose, but stem erect, no knee or climbing organs. Leaf bases with needle-like black spines and a long papery ocrea. Inflorescence quite short, primary bracts strongly lacerated. Grows up to 300 m altitude. Fruit ripe 10 (Vietnam).