

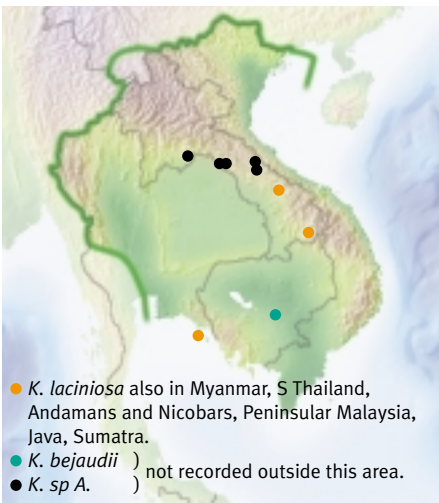
Korthalsia laciniosa

(wai taleuk)

Climbing Clustering Cirrus No knee

Look for:

- Diamond-shaped leaflets, cirrus and branching stems identify the genus.
- Long, net-like ocrea, leaflets ≥ 25 cm long and ≥ 9 on each side of the leaf identify this species.
- The inflorescence has strange furry rachillae with hermaphrodite flowers.



Habitat

In Lao in evergreen forest at about 200 m, in Thailand at 200 m.

Fruiting and flowering months

Flowers ?

Fruit ?

Uses

Handicrafts: unknown.

Trade: unknown

Shoot: unknown

Planting

None known in Lao.



Stem

Stem up to 75 m long and 1.5–2 cm diameter, branching.

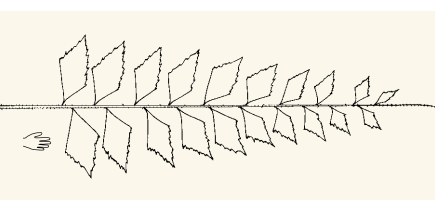
Sheath up to 3.5 cm diameter.

Sheath bright green with grey-brown indumentum.

Spines sparse, the same colour as the sheath, thin, 0.6–1.2 cm.

Ocrea 10–20 cm, tattering, breaking up into a fibrous net on the side opposite the petiole.

Almost unarmed.



Whole **leaf** 1.5–2.5 m long plus a cirrus ≥ 50 cm.

Petiole 30–65 cm long (sometimes only 10 cm in S Thailand).

Largest leaflets 27–39 cm \times 10–22 cm.

Broad diamond-shaped with white indumentum below. Many prominent veins which end at the margin not the tip. Leaves much smaller on sheaths with inflorescences

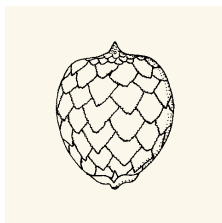
Inflorescence up to 0.75 m long with no flagellum. Quite erect. Stem dies after flowering.

Primary bracts entire, tightly sheathing, unarmed.



No male and female plants: each flower contains both sexes.

Usually 2–3-branched. Rachillae catkin-like, cylindrical and furry with spirally-arranged flowers.



Fruit

2 cm long

2 cm wide

Scales brown when ripe, with wide pale margins.

Seed ruminant.

Compare:

- *C. bousigonii* (9a): knee and flagellum present, no cirrus, stems not branching, no ocrea, inflorescences very different.

- **27a** *Korthalsia bejaudii*

Ocrea short (≤ 4 cm), entire, armed. Leaflets large (≥ 20 cm long), sheath about 2 cm diameter. May be a form of *K. laciniosa*.

- **27b** *Korthalsia* sp A (wai nga, wai nyeng, wai neng, dtellhe)

Ocrea ≤ 9 cm (usually ≤ 4 cm), net-like on one side, almost unarmed. Leaflets ≤ 18 cm long, 4–7 per side, sheath usually ≤ 1.5 cm diameter. May only be a small form of *K. laciniosa*. Evergreen forest at 500–1000 m. Flowers in bud and fruit unripe 3 (Lao).