

Daemonorops jenkinsiana

26

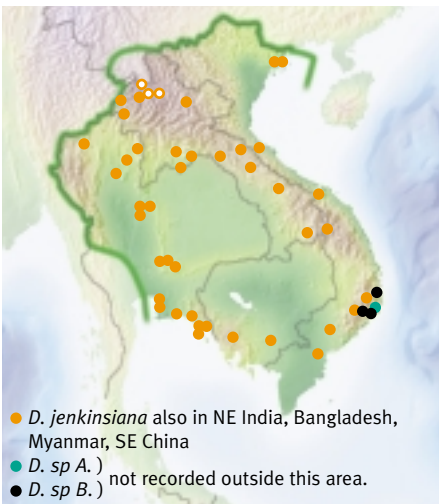
(*boun, boun faat, wai boun, wai boun faat, wai faat, wai keedeng, wai kwa, wai seui, blong chik, re ya, kateng parua, khamay*)

Climbing Clustering Cirrus Knee conspicuous

One of the commonest species. Often survives in scrub near villages, especially in the north.

Look for:

- Sheath densely covered in flat black spines. Leaf with cirrus.
- Inflorescence very distinctive, completely covered by the boat-shaped, spiny first bract.
- Leaflets regularly spaced with many black hairs on the faces.



Habitat

In Lao grows in evergreen forest and scrub at 100–1000 m, often common. In Thailand and Vietnam occurs at similar altitudes.

Fruiting and flowering months

Flowers in bud 12, 1, 3, 5 (Lao), 10, 2, 6 (Thailand), 2 (Vietnam), open 6, 10 (Thailand) Fruit unripe 12, 2, 3, 5 (Lao), 12–2 (Vietnam), 4–6, 11, 12 (Thailand), ripe 3 (Lao), 3, 5, 9, 12 (Thailand), 5 (Vietnam).

Uses

Handicrafts: suitable.

Trade: suitable.

Shoot: edible, large and delicious.

Pretty seeds exported, leaves used as thatch.

Planting

Small trial planting at Nam Xuang. High potential. Reportedly a major crop in SE China.

Stem

Stem up to 25 m long and 1.5–3 cm diameter.

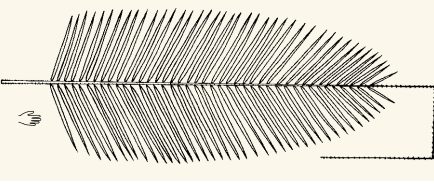
Sheath 3–6 cm diameter.

Sheath green, often covered with reddish-black indumentum.

Spines many, black, a mixture of tiny needles and long flat spines.

Ocrea tiny, dry, with no spines or bristles.

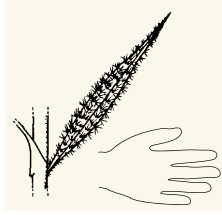




Whole leaf 1–2.5 m long plus a cirrus of 0.5–2 m.

Petiole of upper leaves 10–50 cm long.

Largest leaflets 30–70 cm × 1.5–3.8 cm. Middle vein above prominent. Several lines of black bristles above, even on small seedlings. Margins bristly.

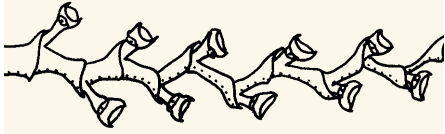


Inflorescence 0.3–0.65 m long with no flagellum. Erect. Stalk less than 5 cm long.

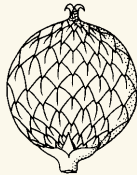
Primary bracts boat-shaped, nested. The outside one completely covers the inflorescence and ends in a 'beak' of variable length. Inflorescence branches of both sexes crowded, zigzag.



♂ usually 4-branched.



♀ usually 2-branched.



Fruit

1.9 cm long

1.9 cm wide

Scales light-coloured, channelled.

Seed ruminant.

Compare:

- Some *Calamus* species (22–25) have cirrus and knee, but the sheath spines and inflorescences are very different.
- Some *Calamus* species (18–21) have similar sheath spines but they have a flagellum not a cirrus.

● 26a *Daemonorops* sp A

Rachis and all spines with thick pale indumentum, spines at sheath mouth up to 18 cm long. Inflorescence ≥1 m long, not completely covered by one bract. Each partial inflorescence is covered by a bract which splits and then falls off before the flowers open (see picture). In *C. hypoleucus* (17) and *C. guruba* (7) the bract splits partly and does not fall off. Fruit unripe 4. Grows at 600 m.



● 26b *Daemonorops* sp B

Leaflets strongly grouped, spines lack thick indumentum. Inflorescence like *Daemonorops* sp A but shorter. Fruit ripe 4. Grows at 700 m.