

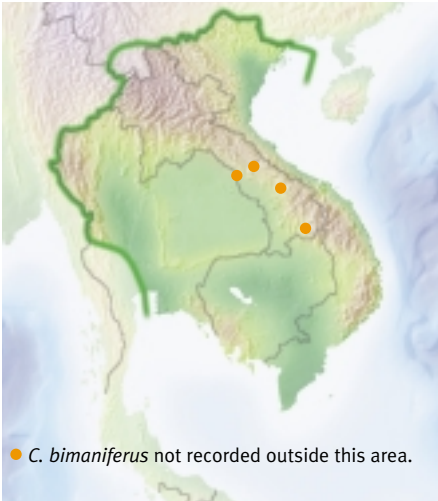
Calamus bimaniferus

(wai hangnou, wai hangnou noi, wai keekai, re itch)

Climbing Clustering Flagellum and cirrus Knee conspicuous

Look for:

- Very slender, with grouped leaflets.
- The only Lao species with a flagellum and a cirrus. Some leaves have a single tiny leaflet instead of a cirrus.



• *C. bimaniferus* not recorded outside this area.

Habitat

In Lao grows in evergreen forest, often degraded areas, at 150–550 m.

Fruiting and flowering months

Flowers ?

Fruit unripe 3, 5.

Uses

Handicrafts: suitable.

Trade: unknown.

Shoot: too small to eat.

Planting

None known in Lao.



Stem

Stem up to 3 m long and 0.3–0.4 cm diameter.

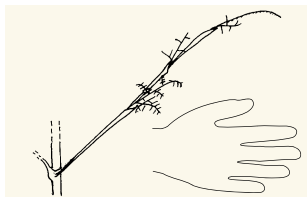
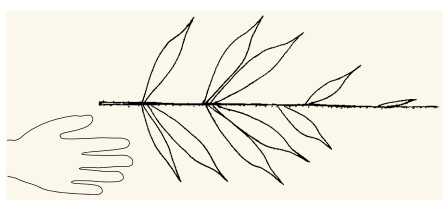
Sheath 0.5–1 cm diameter.

Sheath green with some brown indumentum.

Spines often very few, sometimes absent.

Green at base, brown-black tips, 0.1–0.7 cm long.

Ocrea tiny, dry, with no spines or bristles.



Whole **leaf** 0.3–0.5 m long plus (usually) a cirrus of ≤ 15 cm. Leaves without a cirrus usually end in a single, very small, clawed leaflet, rarely a pair.

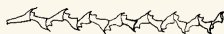
Petiole of upper leaves 8–15 cm long.

Largest leaflets 10–15 cm \times 1.5–2.6 cm.

Three prominent veins, naked above and below. Margins also naked, or sometimes with a few small bristles.

Inflorescence 0.2–0.7 m long with no flagellum. Erect.

Primary bracts entire, loosely sheathing.



♂ usually 3-branched.



♀ usually 3-branched.

Fruit (not illustrated)

≥ 0.8 cm long

≥ 0.8 cm wide

Scales pale with a dark margin. Ripe fruit not seen.

Seed not ruminant.

Compare:

- *C. solitarius* (12), *C. oligostachys* (13), *C. tetradactylus* (14), *C. kingianus* (15) and *C. dioicus* (15a) all have similar leaves but no cirrus and pendulous inflorescences.
- *C. hypoleucus* (17) and *C. salicifolius* (17a): no climbing organs.